



EN

Comfort 2^{INSIDE}



Movement inside your aviary system with the Comfort 2^{INSIDE}

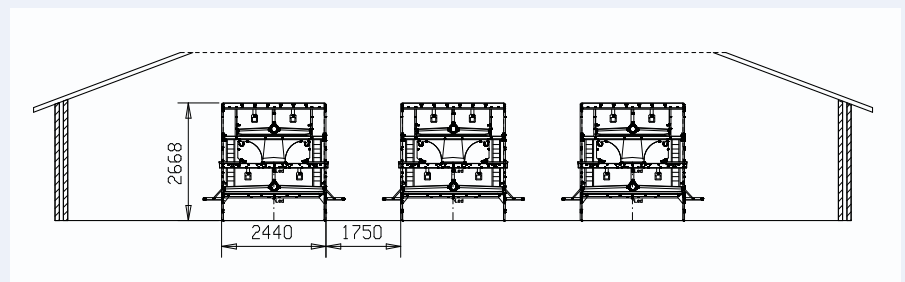
Benefits

The Comfort 2^{INSIDE} aviary system offers many advantages:

- ✓ Easy to access by the layers through the use of stairs inside the aviary system
- ✓ Good overview
- ✓ Feed, water and laying nests are easy accessible
- ✓ Sanitary
- ✓ Long life span

About Comfort 2^{INSIDE}

The Comfort 2^{INSIDE} aviary system is based on the Compact and Comfort 2 aviary system. The system has been developed so that the layers can easily move within the system between the different tiers. This can be achieved because the bottom manure belt is 2440 mm wide and the top manure belt is 1800 mm wide. The Comfort 2^{INSIDE} aviary system has been fitted with the LayMaxx type laying nest.



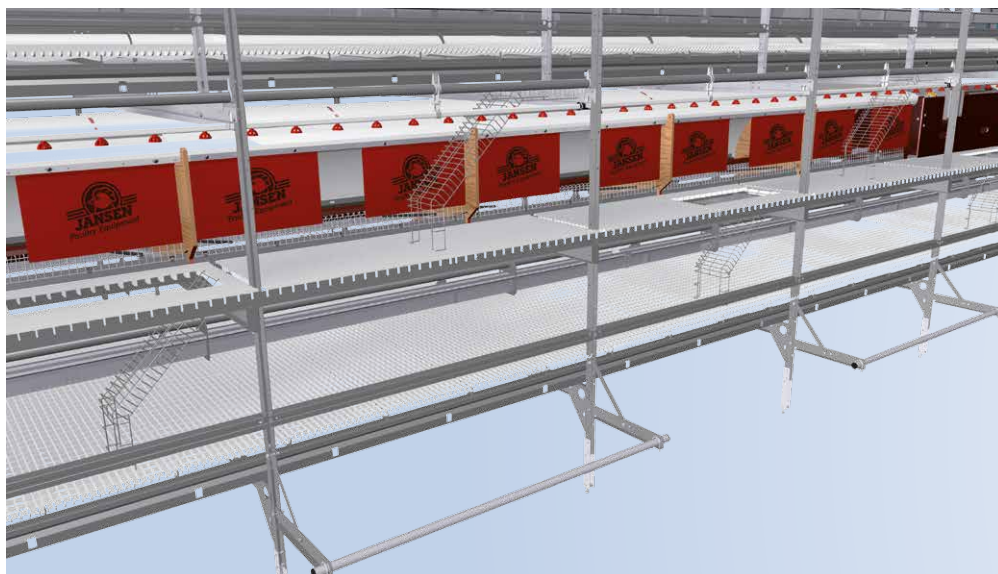
Quietness and space

The layers can easily move to the different tiers by means of the stairs located inside the system. The hens do not have to fly or jump back and forth between different aviary rows any more, to reach the higher tiers. Feed, water and laying nest are easily accessible. On the outside along the bottom of the system every fold-away, fly-on perches have been installed. The system allows a good overview of the layers and it is possible to make the alley-ways between the aviary rows wider.



Comfort 2^{INSIDE}

Movement inside your aviary system with the Comfort 2^{INSIDE}



Options

Optional is the possibility to install an egg belt in the centre of the aviary floor on the 1st and 3rd tier of the system, in case of system eggs which can now be gathered automatically. When this option is applied, the aeration duct will be located along the outside of the system. The aeration duct has an integrated perch and can be counted as extra living space.

The system can be fitted with several options:

- Plastic or wire mesh slats
- Available with triangular top for houses with a low ceiling
- Extra feed line on perch platform
- Manual fold-away wire mesh along the bottom of the system per section or per pen area
- LED lights
- Chain or flex auger feeding
- Various types of drinker nipples can be installed
- System extended through 2nd tier floor in 2 tier houses
- Partitions in the aviary system

Number of hens per m² living area

EU standard:	9	KAT standard:	9 / living space max. 18/m ² house floor area
Organic:	6	Organic:	6



No rights can be obtained to the contents of this leaflet.

Jansen Poultry Equipment
Harselaarseweg 32
3771 MB Barneveld
The Netherlands

T 0031 (0) 342-427000
F 0031 (0) 342-427001



www.jpe.org